

2026 - 2028 Diabetes Clinical Evaluation Program

Earn
20
 CPD hours
 per year!

How does the program work?

Our Diabetes Clinical Evaluation Program is highly valuable, as it helps program participants easily manage and provide clinical care for their patients living with diabetes. It also provides relevant daily updated lists that highlight patients who are due for their recommended 6-monthly HbA1c testing. Participants can check their HbA1c test referral numbers, log in count and send recall letters to patients due for their HbA1c test via the CPD Portal in eResults.

How can I earn CPD hours?

The **annual criteria** for our Diabetes Program include:

- 40 HbA1c tests recommended
- 4 program portal logins/views recommended
- Reflection Activity completed (emailed latter part of the year)

How many CPD hours are awarded?

If you successfully complete the annual program criteria, you will earn a total of **20 CPD hours**:

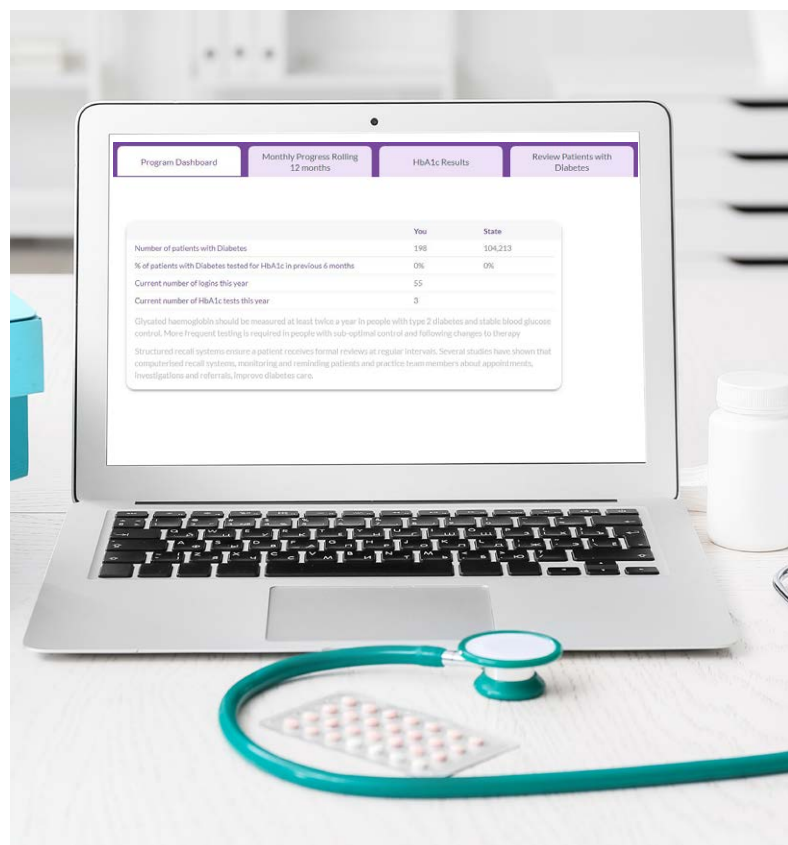
- 10 CPD Measuring Outcomes hours
- 10 CPD Reviewing Performance hours

10

CPD MEASURING
 OUTCOMES
 hours

10

CPD REVIEWING
 PERFORMANCE
 hours



LEARNING OBJECTIVES

1

Create a diabetes-specific patient recall system to improve the pathology review process for your patients living with diabetes.

2

Employ best-practice clinical guidelines for the frequency of pathology monitoring your patients with diabetes.

3

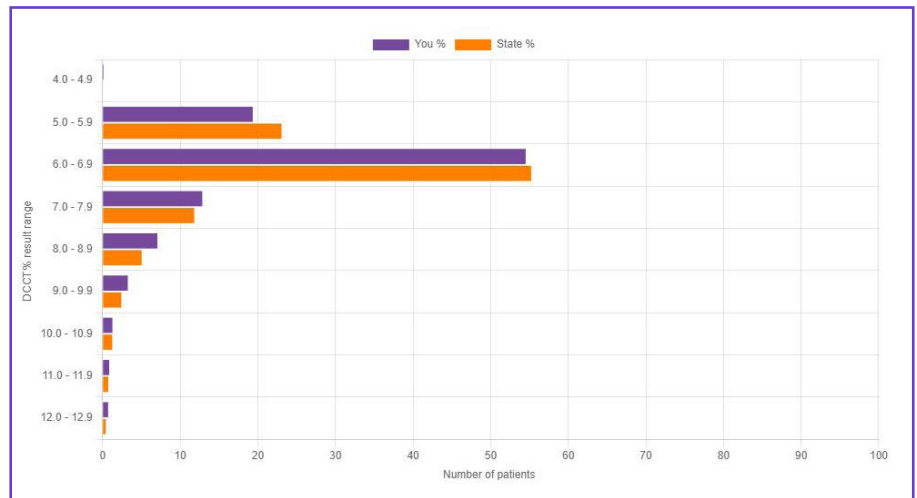
Compare the management of your patients with diabetes against that of your state peers.

4

Propose collaborative strategies to positively influence the management outcomes of your patients living with diabetes.

How do I view the program data?

Data can be viewed via the online CPD Portal in eResults. Program participants (successfully registered) will receive more information directly about how to access the portal. As outlined in the program criteria, participants are required to **log into the portal a recommended 4 times annually**. This portal is also where participants can check their HbA1c test referral numbers, log in count and send recall letters to patients due for their HbA1c test.



How do I register?

- Scan QR Code below
- Registration form will open in your web browser
- Complete the form fields and hit 'Subscribe'
- Your registration will be reviewed by our CPD Team
- Alternatively, visit <http://eepurl.com/giwJr1> to complete the form



REGISTRATION FORM

Scan the QR Code or visit the link below to register: <http://eepurl.com/giwJr1>

Contact us

For any questions relating to this program, email:

diabetes@clinallabs.com.au