

SELF-COLLECTION INSTRUCTIONS for Vaginal Swabs

Testing for Chlamydia, Gonorrhoea and Other Bacterial Infections Testing

Purpose of the Test:

This test detects Chlamydia and Gonorrhoea—common STIs—and other bacterial infections.

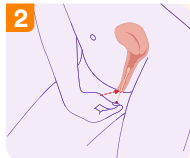
Important notes:

- Ensure you're in a clean and private space
- Follow each step carefully for accurate results

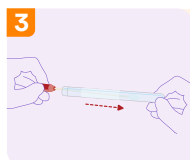
Self-collection instructions (vaginal swabs)



Wash your hands with soap and water, or disinfect with hand sanitiser.



Remove the swab from the tube. Holding the coloured end, gently insert the swab about 2cm into your vagina. Turn the swab once and leave it in place for 10 seconds.



Remove the swab and place it into the provided tube.



Wash your hands again with soap and water, or disinfect with hand sanitiser.



Label the tube with your full name, date of birth, collection site (vaginal), and the time and date of collection.